



Introduction

The conference will be held in Chulalongkorn University, Bangkok, Thailand during April 1-3, 2017. This conference provides opportunities for the delegates to exchange new ideas face-to-face, to establish business or research relations as well as to find global partners for future collaborations.

ICCRE2017 can be checked on **Sciencemeeting online**, which is run by the Chinese Ministry of Education.

ICCRE2017 can be checked on **Nature events directory**, which is run by the Nature Publishing Group.

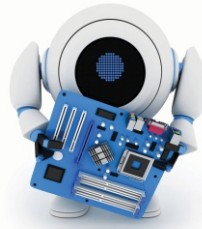
Bangkok, Thailand
April 1-3, 2017

www.iccre.org

Publication

Accepted papers after proper registration and presentation, will be published in the ICCRE 2017 conference Proceedings by IEEE, and reviewed by IEEE Xplore and Ei Compendex.

ICCRE 2016 have been included in the **IEEE Xplore**.



Submission Methods

- Full Paper (Presentation and Publication)
- Abstract (Presentation only)
- 1.Electronic Submission System
- 2.iccre@saise.org

Important Dates

Submission Deadline	December 20, 2016
Notification Date	January 20, 2017
Registration Deadline	February 10, 2017
Conference Dates	April 1-3, 2017

Call For Papers

- Adaptive control**
- Robust control
- Process control
- Complex systems
- Co-operative control
- Identification and estimation
- Nonlinear systems
- Intelligent systems
- Discrete event systems
- Hybrid systems
- Networked control systems
- Adaptive control
- Robust control
- Process control
- Complex systems
- Co-operative control
- Identification and estimation
- Nonlinear systems
- Intelligent systems
- Discrete event systems
- Hybrid systems
- Robotics Science and Engineering**
- Modeling and identification
- Robot control
- Mobile robotics
- Mobile sensor networks
- Perception systems
- Micro robots and micro-manipulation
- Visual servoing
- Search, rescue and field robotics
- Robot sensing and data fusion
- Vision Science and Engineering**
- Image/video analysis
- Feature extraction, grouping and segmentation
- Scene analysis
- Pattern recognition
- Learning in vision

[More](#)

Keynote Speakers

Prof. Shuzhi Sam Ge

National University of Singapore, Singapore

Dr. Ratchatin Chanchaen

Chulalongkorn University, Thailand

Prof. Chih-Shing (Stan) Wei

The Cooper Union for the Advancement of Science and Art, USA

Prof. Sri Krishnan

Ryerson University, Canada

Conference Venue

Chulalongkorn University, Thailand

Chulalongkorn University is a public and autonomous research university in Bangkok, Thailand. It is the oldest and most prestigious university in the Thai modern educational system.

The university began taking shape during King Chulalongkorn's reign when he founded the Royal Pages School in 1902 at The Grand Palace of Thailand. During the reign of his son, King Vajiravudh, the Royal Pages School became the Civil Service College of King Chulalongkorn. The Rockefeller Foundation, was instrumental in helping the college form its academic foundation. On March 26, 1917, King Vajiravudh renamed the college Chulalongkorn University.

Website of Chulalongkorn University: <http://www.chula.ac.th/en>

Contact Us

Ms. Jasmine. P. Nieh
Conference Secretary of ICCRE 2017

Email: iccre@saise.org
Tel: +86-13419999996

